

“

*Since the first day of classes, I felt supported by staff and professors. I remember going to my seminar professor for help. She listened and showed me many resources on campus. After that, I received excellent grades and had my name on the dean's list.”*

**Duda Formoso '26 | Rio de Janeiro, Brazil**

Brazilian Student Association, IC Rotaract Club, Ithaca College Resident Assistant, New Student and Transition Programs (Student Assistant), and *The Ithacan*

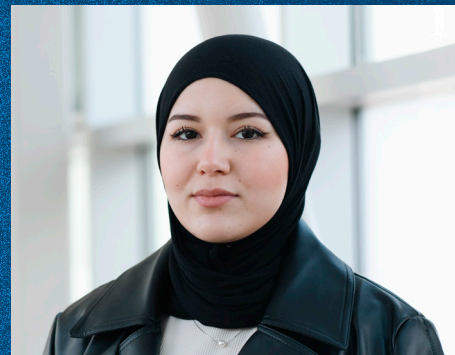


“

*If it wasn't for the faculty here, 100% I wouldn't be doing what I'm doing. The support you find at IC is from everyone—faculty, staff, and students. It's a very inclusive environment. You will find help and encouragement in every domain.”*

**Hadil Khodji '25 | Marrakesh, Morocco**

IC Entrepreneurs' Organization, Information Technology Student Ambassador, Ithaca College Resident Assistant, and School of Business Peer Advisor



## Why Study at Ithaca College?

**#1**

Best Undergraduate Teaching (Regional Universities, North)  
—U.S. News & World Report

**Top 20**

Best College Towns and Cities in America  
—WalletHub

**Top 25**

LGBTQ-Friendly Colleges and Universities  
—Campus Pride

**28**

Division III Athletic Teams

**17.5%**

of Ithaca, New York, Residents Born Outside the United States



### Extend Your Studies

Ithaca College–Cornell University Course Exchange

Ithaca College London Center

James B. Pendleton Center, Los Angeles, California

Study Abroad in 40+ Countries

### Campus Safety

Professional staff are on duty 24 hours a day, 7 days a week, 365 days a year to keep our community safe.

“

*My major allows me to gain a lot of hands-on experience during and outside class. In my classes, we perform in-class exercises and practice concepts in the form of assignments. Through clubs and organizations, I get a chance to work with professional equipment, learn in the field, and work with and learn from my peers who have similar interests.”*

**Baneet Pukhrambam '26 | New Delhi, India**  
Admission Host, IC London Center, ICTV, Leadership Scholar, Student Governance Council



////

## More Information

[ithaca.edu/international](https://ithaca.edu/international)

Contact the Office of Admission:  
[admission@ithaca.edu](mailto:admission@ithaca.edu) | 1 607 274 3124

View campus:  
[ithaca.edu/viewbook](https://ithaca.edu/viewbook)



ITHACA COLLEGE

953 Danby Road | Ithaca, NY 14850-7002  
[ithaca.edu](https://ithaca.edu)

[i](#) [f](#) [@](#) [@ithacacollege](#)

8.24



ITHACA  
COLLEGE





/////

## Five Schools on One Campus

Business | Communications | Health Sciences and Human Performance | Humanities and Sciences | Music, Theatre, and Dance

Founded in 1892, Ithaca College is a place where you can study more than one area of interest. Our Exploratory Program is the perfect starting point if you are not sure yet what you want to study.

### UNDERGRADUATE MAJORS AND PROGRAMS

Accounting (BS)	Environmental Science (BS)	Mathematics (BA, BS)	Speech-Language Pathology (BS)
Acting (BFA)	Exercise Science (BS)	Mathematics-Physics (BA)	Sport Management (BS)
Advertising, Public Relations, and Marketing Communications (BS)	<i>Concentrations:</i>	Music (BA)	Sports Media (BS)
Applied Physics (BS)	<i>Medical Sciences</i>	Music Education* (BM)	Stage Management (BFA)
Architectural Studies (BA)	<i>Sport Sciences</i>	Music Education and Performance* (BM)	Strategic Leadership (BS)
Art (BA, BFA)	<i>Strength and Conditioning</i>	Music in Combination with an Outside Field (BM)	Television, Photography, and Digital Media (BS)
Art History (BA)	Exercise Science/Pre-Athletic Training (BS/MS)	Musical Theatre (BFA)	Theatre Administration (BS)
Biochemistry (BS)	Exploratory Program	Occupational Science/Occupational Therapy (BS/OTD)	Theatre Production and Design (BFA)
Biology (BA, BS)	<i>Business Pathways</i>	Performance (BM)	Theatre Studies (BA)
Business Analytics (BS)	<i>Humanities and Sciences Pathways</i>	Philosophy (BA)	Undecided (see Exploratory Program)
Chemistry (BS)	<i>Park (Communications) Pathways</i>	Physics (BS)	Women's, Gender, and Sexuality Studies (BA)
Clinical Health Studies/Physical Therapy (BS/DPT)	<i>Pre-Health Professions Program</i>	Physics-Engineering 3-2	World Languages and Cultures (BA)
Communication Strategy and Design (BS)	Film (BFA)	Politics (BA)	Writing (BA)
Composition (BM)	Finance (BS)	Psychology (BA)	Writing for Film, TV, and Emerging Media (BFA)
Computer Science (BA, BS)	Health Sciences (BS)	Public and Community Health (BS)	
Documentary Studies and Production (BA)	History (BA)	Race, Power, and Resistance (BA)	
Economics (BA, BS)	Jazz Studies (BM)	Religious Studies (BA)	
Education Studies (BA)	Journalism (BA)	Screen Cultures (BA)	
English (BA)	Legal Studies (BA)	Sociology (BA)	
	Marketing (BS)	Sound Recording Technology (BM)	

/////

## Apply to Ithaca College

### APPLICATION DEADLINES

<b>November 1</b>	Early Decision*
<b>December 1</b>	Early Action*
<b>February 1</b>	Regular Decision*

*\*Except for select music and theatre majors*

IC is an AA/EO employer and educational institution and prohibits illegal discrimination.  
ithaca.edu/non-discrimination-statement

### APPLICATION CHECKLIST

- Common App
- Secondary School Transcript
- Postsecondary Transcript (if applicable)
- Letter of Recommendation
- Financial Aid Application – FAFSA (for U.S. citizens) – Ithaca College Financial Aid Application (for international citizens)
- Proof of English Proficiency (if your native language is not English)

SAT/ACT scores are not required.

### FINANCIAL AID

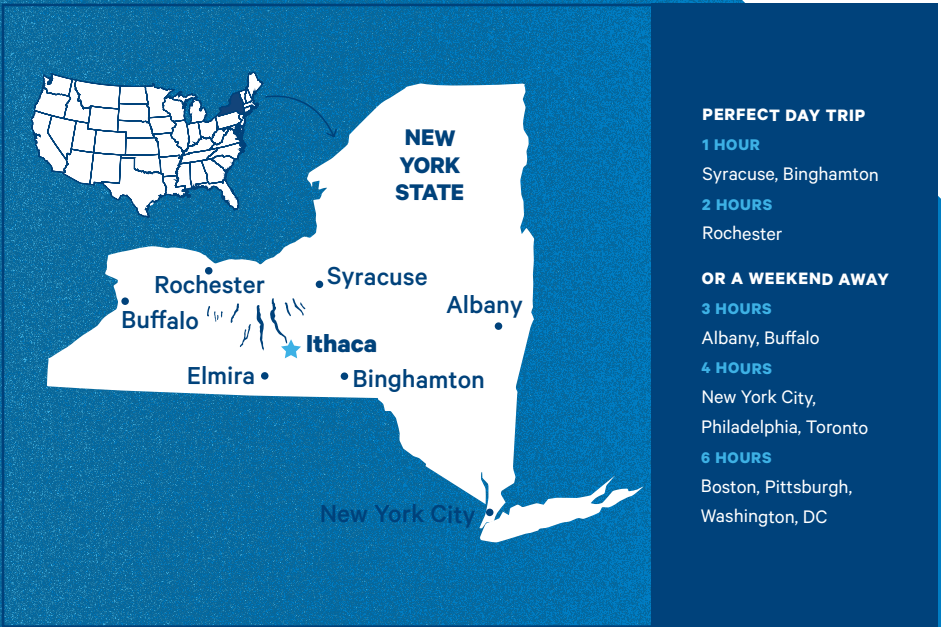
All students are eligible for merit scholarships.  
[ithaca.edu/fin-aid](https://ithaca.edu/fin-aid)

### 2024–25 COST OF ATTENDANCE

Tuition	\$53,540
Housing and Meals	\$16,192
Books and Supplies (estimated)	\$ 850
Health and Accident Insurance (required)	\$3,066
Total (Estimate)	\$73,648

Note: This does not include personal and transportation expenses.

### OUR LOCATION



#### PERFECT DAY TRIP

- 1 HOUR**  
Syracuse, Binghamton
- 2 HOURS**  
Rochester

#### OR A WEEKEND AWAY

- 3 HOURS**  
Albany, Buffalo
- 4 HOURS**  
New York City, Philadelphia, Toronto
- 6 HOURS**  
Boston, Pittsburgh, Washington, DC

**4,400+**  
UNDERGRADUATE STUDENTS

**11:1**  
STUDENT-FACULTY RATIO

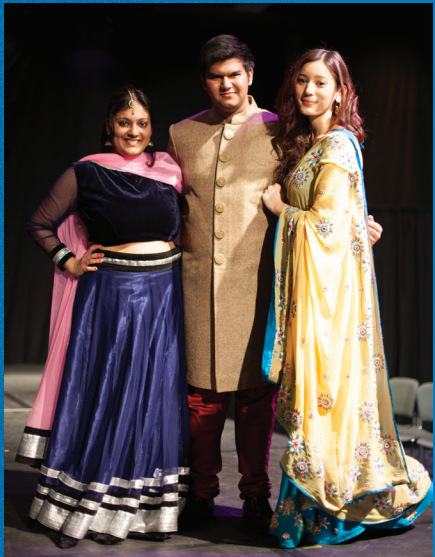
**AVERAGE CLASS SIZE**  
**19 students**

**144,000+**  
JOBS, INTERNSHIPS, AND FELLOWSHIPS AVAILABLE EACH YEAR

**75% of students**  
LIVE ON CAMPUS

**3.2%**  
INTERNATIONAL STUDENTS

**40%**  
STUDENTS PARTICIPATING IN SPORTS



/////

## Your Life at Ithaca College

### LIVING ON CAMPUS

Housing on campus is guaranteed for all four years, including vacations and holidays. Summer storage is available.

[ithaca.edu/res-life](https://ithaca.edu/res-life)

### DINING ON CAMPUS

Kosher, Halal, vegan, and vegetarian options are regularly available.

[ithaca.edu/dining](https://ithaca.edu/dining)

### TRANSPORTATION

- Ithaca Tompkins Regional Airport (ITH): connections to New York City
- Bus service to New York City seven days a week
- Tompkins Consolidated Area Transit (local bus)
- Taxis

### CLIMATE

#### AVERAGE DAYTIME TEMPERATURES

August–October: 15°C  
November–January: 10.3°C  
February–April: 6.6°C  
May–July: 24°C

#### AVERAGE ANNUAL SNOWFALL

December–March: 165 cm

