

SHOW ME THE MONEY— GRANTS 101 WORKSHOP



Warren Calderone

Director, Corporate, Foundation
Relations and Sponsored
Research

Overall Grant and SR Support

Sponsored Research Includes:

- ➔ Externally funded grants
- ➔ IRB
- ➔ IACUC
- ➔ Biosafety
- ➔ Research Council

Overview of Grants at IC

➔ Benefits of Grant Funding

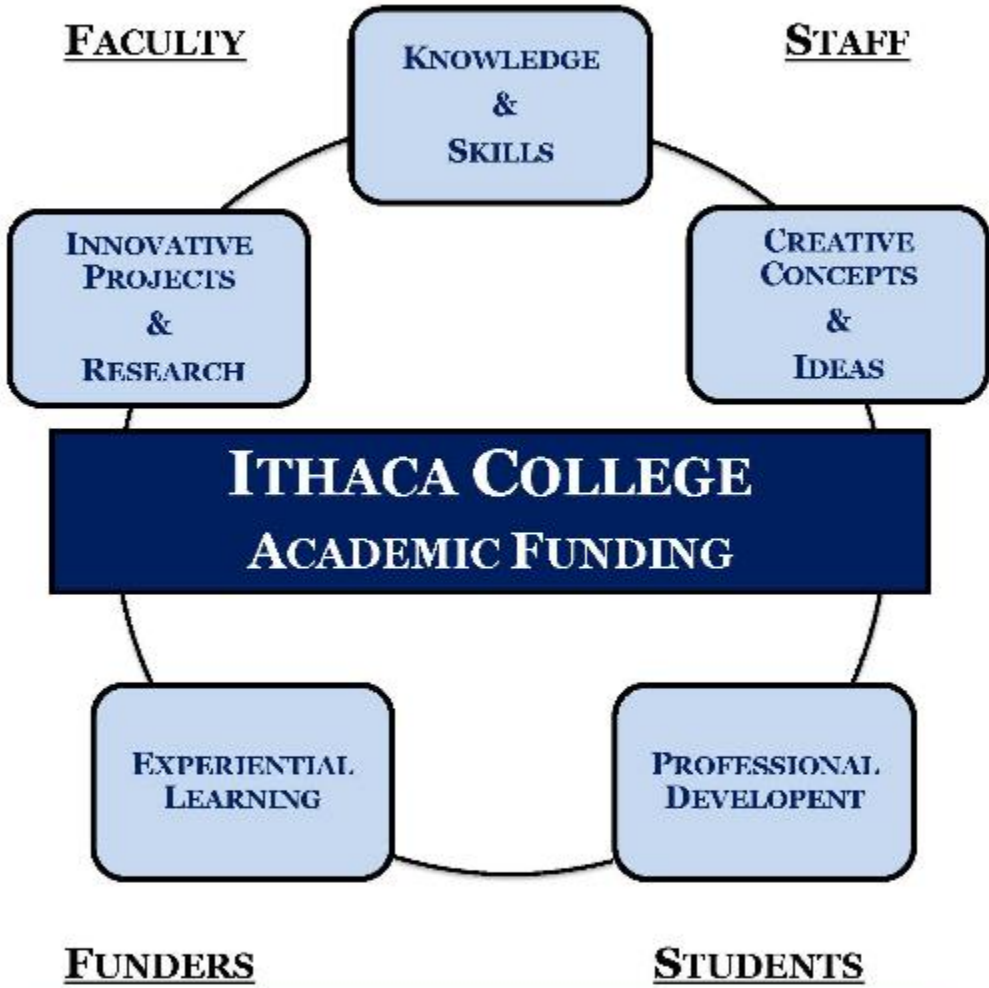
➔ Students

➔ Faculty

➔ Institution



SPONSORED RESEARCH



CORPORATE AND FOUNDATION RELATIONS

Overview of Grants at IC

➔ Grants Statistics

➔ Submissions/Awards

➔ SR and CFR



In the beginning: Concept

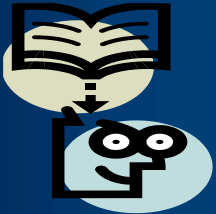


Two general tracks:

Idea



Search for funders



RFP/FOA



Align concept/idea



Internal SR Grants

REACHE - Research to Enhance
Academic Collaboration in Higher
Education

ACE – Advancing Creative
Expression

Concept Paper

1-2 page brief description of idea

- Problem Statement/Need
- Goals/Objectives
- Activities and Timeframe
- Personnel
- Estimated funding need

Grant Proposal

- ➔ Application form
- ➔ Abstract
- ➔ Proposal Narrative
- ➔ Budget with justification
- ➔ Timeline
- ➔ CVs/biosketches
- ➔ Other, e.g., Board list, letters of support or commitment

Grant Proposal Tips

- **DEADLINE!** Grant guidelines.
- Sustainability
- Dissemination of results
- Cost sharing: cash and in-kind
- Font, margins, grammar, typos
- Project management and reporting



If you do not win

1. Don't be discouraged. Success rates are often low.
2. Read the reviews carefully, if provided, and ask colleagues to do the same.
3. Discuss reviews with program officer.
4. Address reviews within resubmission.



In Summary

- Talk to Academic Funding staff
- Talk to Program Officer at funder
- Prepare/send Concept Paper
- Get all necessary approvals at IC
- Allow sufficient time for submission
- Be persistent in research quests

**Please consider serving
on a federal agency
review panel**



Stephanie St. John

Academic Operations Specialist

Grant Administrative Support

Let's Go To The Website

<http://www.ithaca.edu/sponsored-research/acadfund>

Marc Israel

Assistant Provost Finance and
Administrative Operations

Pre-Award Budgeting

Budget Template

IC Faculty Salary & Benefits										
	Base Salary	# summer months	# release time credit hours	Summer Salary	Acad Year Salary	Summer + Acad Year Salary	Summer Fringe 9%	Acad Year Fringe 32%	Summer + Acad Year Fringe	Total Salary & Fringe
	\$ -	0	0	\$ -	\$ -	\$ -	\$ -	\$ -	\$ -	\$ -
	\$ -	0	0	\$ -	\$ -	\$ -	\$ -	\$ -	\$ -	\$ -
	\$ -	0	0	\$ -	\$ -	\$ -	\$ -	\$ -	\$ -	\$ -
IC Faculty Salary & Benefits Total				\$ -	\$ -	\$ -	\$ -	\$ -	\$ -	\$ -
IC Staff Salary & Benefits										
	Base Salary	% of time spent on grant*	Add'l Dollars (dollars on top of base salary)**	In Load Salary	Add'l Dollars	Total Salary	In Load Fringe 32%	Add'l Dollars Fringe 9%	Total Fringe	Total Salary & Fringe
	\$ -	0%	\$ -	\$ -	\$ -	\$ -	\$ -	\$ -	\$ -	\$ -
	\$ -	0%	\$ -	\$ -	\$ -	\$ -	\$ -	\$ -	\$ -	\$ -
	\$ -	0%	\$ -	\$ -	\$ -	\$ -	\$ -	\$ -	\$ -	\$ -
IC Staff Salary & Benefits Total				\$ -	\$ -	\$ -	\$ -	\$ -	\$ -	\$ -

Indirect Costs

- ➔ **“Facility and Administrative” costs that cannot be easily and specifically identified with a particular project or activity**
- ➔ **Indirect costs, overhead costs and Facilities and Administrative (F&A) costs are all synonymous**

Indirect Costs

- ➔ IC is able to charge indirect costs to federal grants using an approved rate
- ➔ Dept. of Health & Human Services issues F&A cost rate agreement
- ➔ Current rate: 55.3% of direct salaries and wages, excluding fringe benefits

Brian Erickson

Accountant

Post-Award Support

Post-Award

- You got your award! Celebrate! And then what?
- Create unique project number:
03.02.17.204.xxxx.000.294XX
- Accounts are set-up for each budget item and approved budget is loaded into Parnassus

Post-Award

- Accountant e-mails PI and Dean's office once project and budget are created
- Accountant coordinates with Dean's office to ensure salary appointments are updated as needed
- Start spending!
- Accountant handles all invoice billings, reimbursement requests and financial reporting as required by granting agency

Indirect Cost Distribution

- ➔ **Indirect costs are charged by Accountant to grant each month**
- ➔ **Distribution:**
 - **General Fund 30%**
 - **Sponsored Research 30%**
 - **Provost 10%**
 - **School 10%**
 - **Department 5%**
 - **Principal Investigator (PI) or Project Director 15%**

Indirect Cost Distribution

- ➔ Funds can be used to advance research, professional activity or creative activity on current or potential future grant projects
- ➔ Each school, department and PI has unique account number to track funds available
- ➔ Additional incentive to get grant funding!



Guest Speaker

Thank you

